

Mercure Sydney

818 - 820 George Street, Sydney NSW 2000

Star Rating – 4 star

Distance from Sydney International Airport – 10km, 20 minutes by car.

Escape to your home away from home in the heart of Sydney city centre. Mercure Sydney is the ultimate urban sanctuary for business guests and families alike. Proud recipient of TripAdvisor's Certificate of Excellence in 2013 and winner of Tourism Accommodation Australia's Redeveloped Accommodation Hotel of the Year for 2014, our hotel welcomes you with friendly service, outstanding amenities, and an unbeatable location in Sydney's Central Business District (CBD).

Our room and suite accommodations are spacious and carefully designed with flat-screen TVs, plush beds, and picturesque city views. Gaze out on the Sydney skyline from our signature Corporate Privilege accommodations, as you prepare yourself for a productive day.

Room Rates per night

Standard Queen Room

\$239 per night with complimentary WiFi in room.

One queen bed or 2x doubles

Max 2 adults

These spacious and contemporary Standard Room accommodations are designed for single travellers or for couples. They offer one Queen, one Double, or one Single bed, a European pillow menu, a work desk, a flat-screen TV, high-speed broadband Internet access, and 24-hour room service. Additional amenities include local magazines in-room, as well as complimentary newspaper delivery available on request.

Privilege Room

\$289 per night with complimentary WiFi in room.

One king bed or 2x doubles

Max 2 adults

Exceptional comfort, personalised service, and exquisite "extras": these are just a few of the perks that describe Mercure Sydney's signature Corporate Privilege Rooms. These enhanced 13th floor accommodations are infused with a sense of elegance and a modern style befitting the Accor Hotel brand – from chocolates and Evian



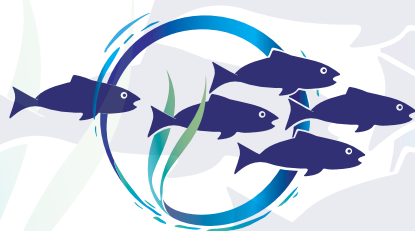
water awaiting your arrival to fluffy bathrobes, slippers, and gourmet tea and coffee facilities to help you set the stage for total contentment. If you're here for business, you can take advantage of helpful touches including high-speed Internet, shoe shine amenities, and a high-wattage hair dryer. But of course, you don't have to be a business traveller to enjoy Corporate Privilege accommodations. Whatever your reason for visiting Sydney, you'll look forward to settling down on your Queen bed at the end of the day, with a cup of Dilmah tea and a selection of pillows from our European pillow menu.

Room Features

- Air conditioning
- Bathroom doors 32 inches wide
- TV with on-screen billing info
- Remote control TV
- Direct dial telephone
- Work desk in all rooms
- European pillow menu
- TV room service ordering
- Satellite/cable colour TV
- Manual temperature control
- Free access with phone card
- Coffee/tea making facilities
- Bathtub

Hotel Features

- 24 hour reception
- 24 hour room service
- Tour Information desk
- Concierge
- Heated swimming pool
- Sauna
- State-of-the-art gym
- In Room Massage Service by Rejuvenators Health Massage
- Restaurant
- Eve's place Bar and Brewery
- In-house laundry and guest laundry services



ASFB & ISSES 2015
SYDNEY-AUSTRALIA 11-14 OCT

Mercure Sydney

818 - 820 George Street, Sydney NSW 2000



ASFB & ISSESR 2015
SYDNEY-AUSTRALIA 11-14 OCT